

# CDLector

## Mass CD-Ripping Which Makes a Jukebox Obsolete

NOA's CDLector™ station is a mass CD-ripping system that is capable of handling up to eight parallel drives. Designed to extract audio from CDs into digital audio objects with perfect control over interpolation, it delivers optimal results even for heavily damaged items. CDLector™ prompts you to insert the right carrier into the drive with automatic opening/closing of the corresponding drive in automatic mode.

Alternatively, the system can use the carrier barcode to fetch the corresponding metadata item to be digitized. As it is harder and harder to get reliable CD ripping drives with proven C2 behaviour, NOA delivers specifically selected CD drives which are proven to get best results in interpolation quality.

CDLector™ includes algorithmic analysis as well as advanced metadata retrieval, and supports four read modes:

### ARCHIVE MODE

Reads all sectors up to 64 times and will only move on to read the next sector if it has an exact match between two read results (recommended for archives).

### BURST C2 MODE

Reads in Archive Mode until a C2 error is detected. From there on it switches its reading mode progressively to C2 mode and upon further failure into Burst mode, annotating the read mode changes. The last mode is kept until the end of the current carrier, switching back to Archive Mode on the start of the next.

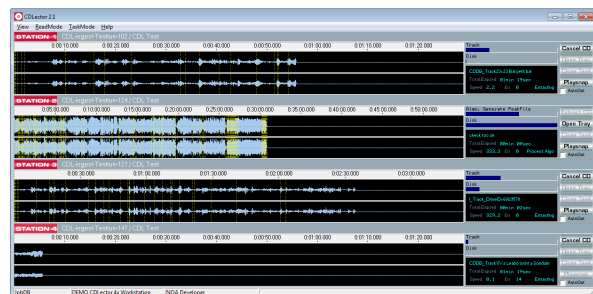
### ALTERNATE MODE

Alternate Mode starts in Archive Mode and switches into burst Mode upon uncorrectable read errors, annotating the read mode change until the end of the current track. On the start of the next track, it switches back to Archive Mode automatically.

### BURST MODE

Can be used for CDs when no other method of grabbing will lead to a result. Burst Mode is a single-pass mode with the highest speed (typically 28x) and no transfer security, except for algorithmic traces.

In Archive Mode, NOA CDLector is able to extract up to 50.000 CDs in less than a year. With CDLector, you can load CDs in any order without worrying about mistakes in the loading process or cross-checking content with the metadata. And since CDLector can handle 8 CDs in parallel at 2 minutes each, human interaction is required only every 15 seconds, which is a major advantage over jukebox solutions.



CDLector™ digitizing CDs on 4 stations - upgradeable to 8 stations.



**CDLector**

**FEATURES**

Up to 1.000 CDs per day (two shifts, 55 mins/CD, eight CD-ROMs, archive mode readout)

Extraction of ISRC and CD text

Consulting of (selectable) Internet database for track information

Reads most copy-protected CDs

Play while grab

Supports up to eight external CD drives

C2 indirect analysis

Access all algorithmic quality information in real time and over traces

Load task from mediARC™ or jobDB™

Manual load mode

Auto mode via barcode (upon pre-sorted lists)

Partial or concatenated extraction via XML/EDL import in jobDB™ or mediARC™

Automatic carrier manipulation (hands-off operation)

Single or continuous file encoding

Preselected drives for optimized grabbing results

Requires jobDB™ or mediARC™ workflow backbone

**EVENT-RELATED PARAMETERS**

Clicks L/R

Digital overload

Mute L/R

CD-Read errors (E32 indication)

**TRACES**

Bandwidth L/R (x10 kHz)

Correlation (-1/+1)

RMS L/R (dBfs)

Peak L/R (dBfs)

**OVERALL STATISTICS**

Number of Mutes L/R

Number of Clicks L/R

Mean Noise L/R

Mean RMS L/R

**CDLector HARDWARE COMPONENTS**

**N6072 WORKSTATION**

- Connection for up to eight USB drives
- One professional digital AES/EBU, analog I/O, and optical I/O interface
- Delivery with four to eight preselected CD-ROM drives

**Technical specs**

- Minimum DualCore processor
- Minimum 6 GB RAM
- 10/100/1000 Mbit Connection (CIFS)
- Minimum 160-GB SATA internal Drive, 160-GB SATA data drive
- Dual-head graphic adapter
- 19-inch, 4-RU rackmount computer case
- Win7 Pro English installed
- Optimized for data transfer and stability



**NOA CD DRIVES**

- Reliable error reporting behavior
- Tested with industrially normed test CDs
- Proven ISRC, TOC, and emphasis read out
- Meets strong RedBook specifications
- Single drives in USB enclosures
- Optionally available as 4-RU